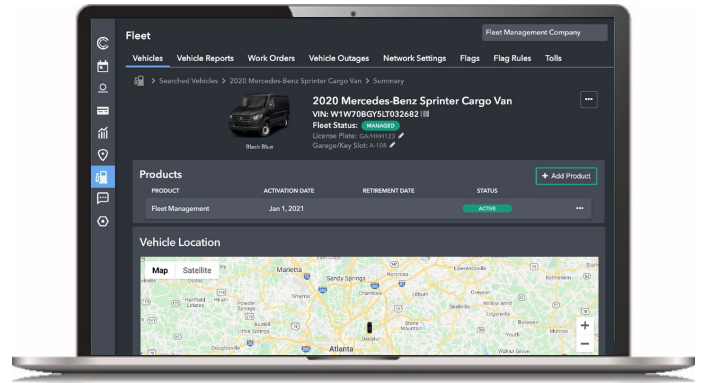


MAXIMIZE EFFICIENCY AND FLEET UTILIZATION

The Cox Automotive Mobility Fleet Platform makes it easy for fleet operators and managers to reduce downtime, monitor and maintain assets and make decisions grounded in data. Cox Automotive Mobility Fleet Platform's proprietary data enables you to maximize efficiency and utilization with data-rich fleet telematics, powerful analytics, and easy-to-use apps, tools and dashboards—all accessible through a single fleet management system.



BETTER INSIGHTS = BETTER DECISIONS

The Cox Automotive Mobility Fleet Platform not only allows you to manage your fleet efficiently, but also gives you the data and information you need to forecast accurately and make smart decisions about customers and staffing. A detailed fleet management report enables you to:



Save time and manage fleet operations digitally
Manage work orders, vehicle history, vehicle location, and improve uptime while reducing unexpected costs and penalties in one easy-to-use, centralized platform.



Track and monitor vehicle assets in real-time
Use GPS tracking to create geo-fences and set up customized, intelligent alerts to protect your assets. Monitor mileage, driving behavior and vehicle service windows with customizable vehicle flags and alerts.



Make data-driven decisions and understand TCO See current and future valuations for your mix of vehicles and use powerful data to make informed decisions on what vehicles to purchase, total cost and when to off-load.



Predict depreciation and vehicle repair costs
Use forecasting intelligence to make smarter decisions with your fleet. Predictive depreciation and upcoming repair costs can help you determine whether to hold onto a vehicle or off-load.

